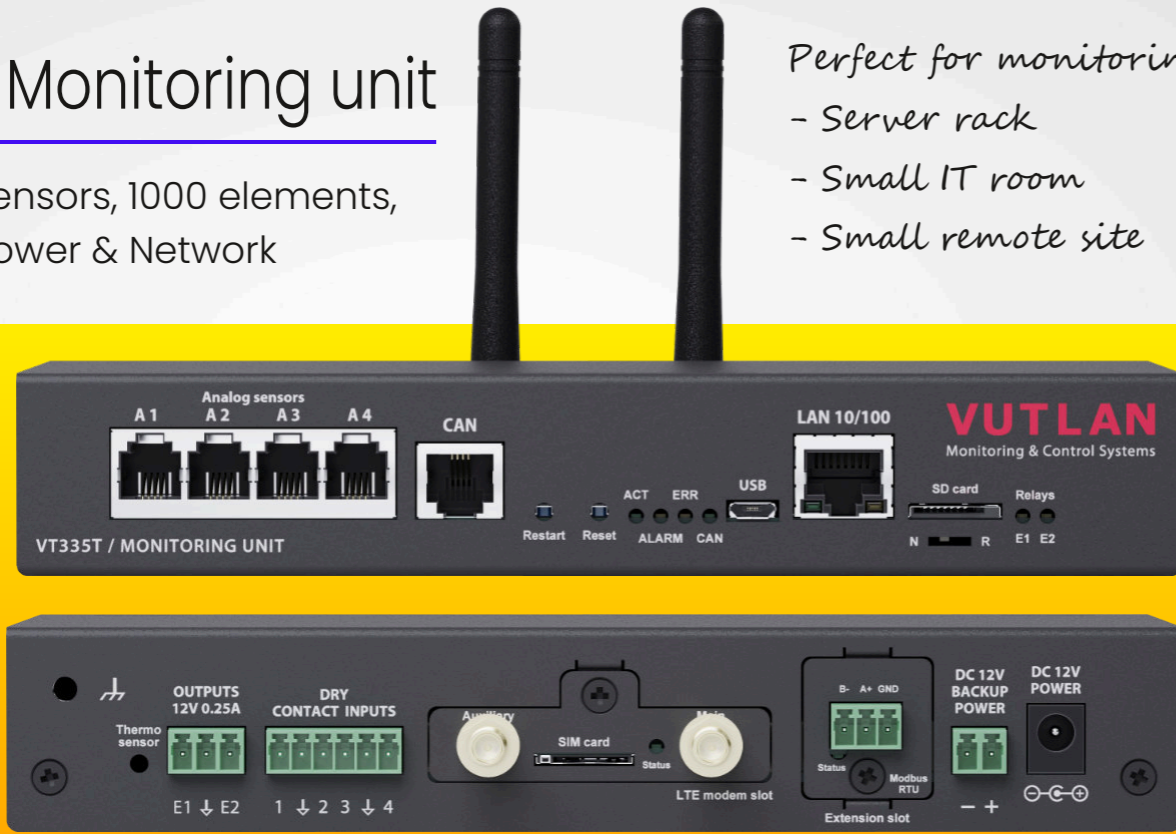




Monitoring unit VT335t

VT335t / Monitoring unit

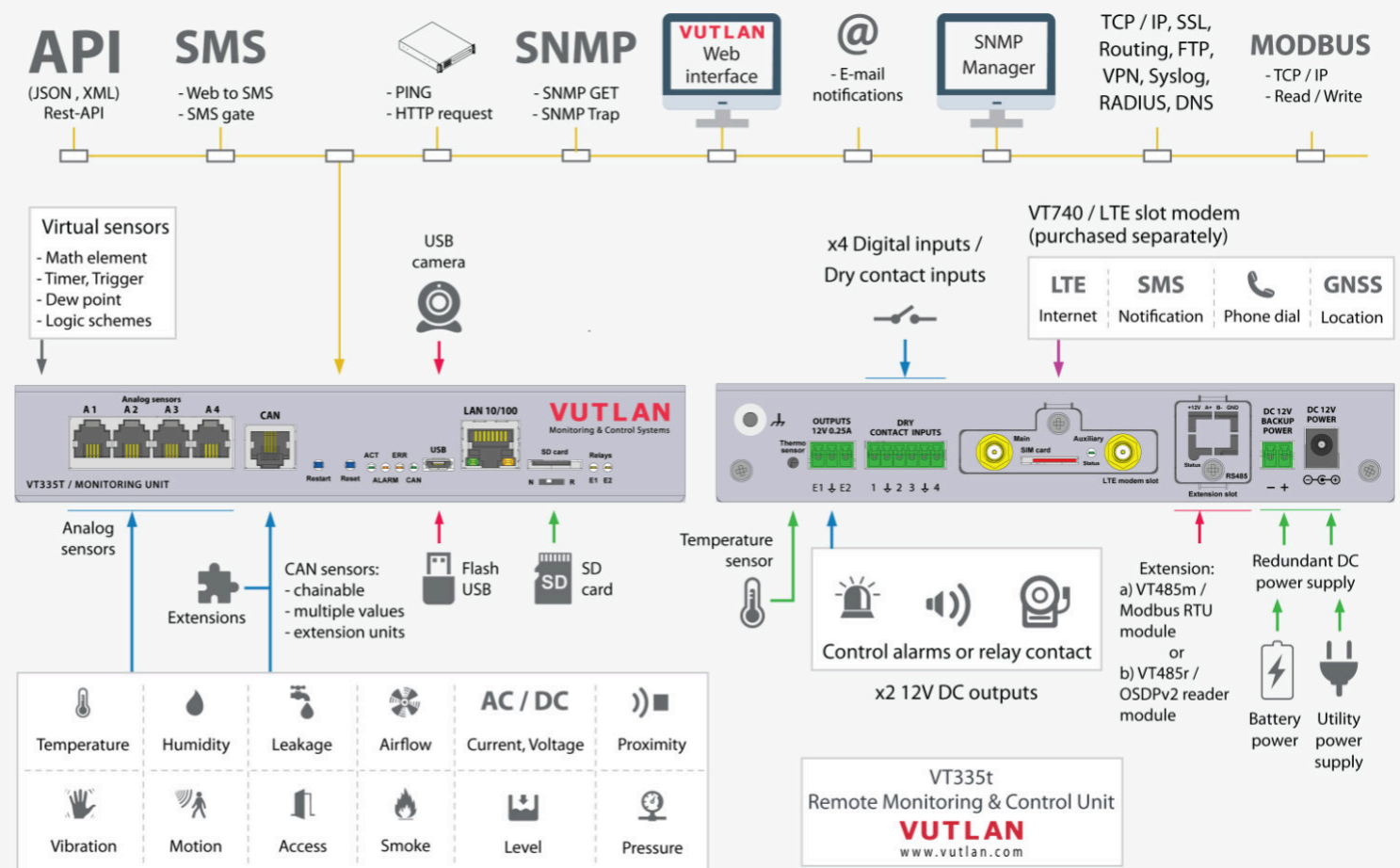
Monitor 150 sensors, 1000 elements,
Redundant Power & Network



Perfect for monitoring:

- Server rack
- Small IT room
- Small remote site

Example connection



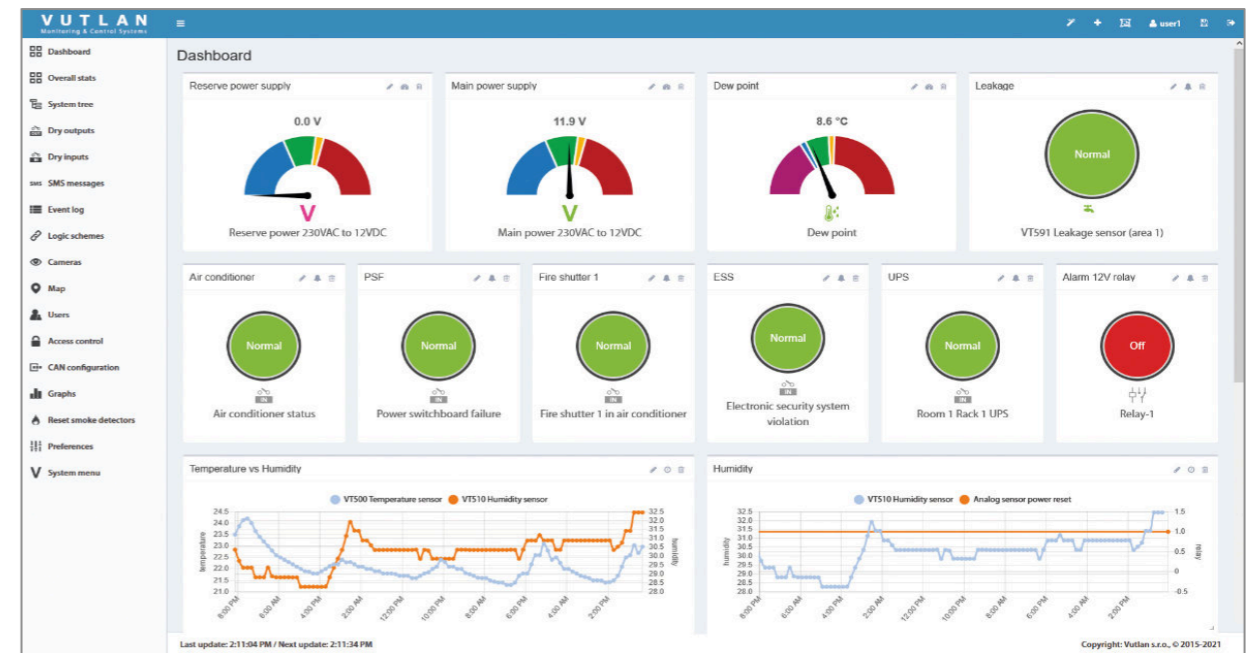
Specifications

CPU Speed / RAM / OS	2 cores, 720mHz / 128Mb / Linux v.6.2
Ethernet	10/100Mbps
Redundant power	x2 12V DC inputs
USB port	For USB camera, USB flash, USB hub
Analog ports	x4 ports for sensors (extendable)
CAN port	x1 port (max. 32 sensors & extensions)
Dry Contact inputs	x4 digital inputs
Relays (12VDC)	x2 outputs, 0.25A each
SD card slot	Up to 512 Gb SDHC
LTE slot modem	Ethernet, SMS, GPS (ordered separately)
Mounting	Desktop (Wall, DIN, & 19" brackets as extensions)
Extensions	VT485m / Modbus RTU or VT485r / OSDPv2 reader extension
Warranty	3 years
Support	On-line portal

Supports

- Centralized Monitoring & Control**
 - Responsive Web Interface
 - SNMP v1, v2c, v3
- Scalability**
 - Extension units, LTE modem, OSDPv2, Modbus RTU
 - Modbus TCP/IP, 4-20mA, 0-10V, Analog, CAN
- Improved security**
 - OpenVPN, SSL, HTTPS
 - Three-tier data access permissions with login
- Protocol support**
 - DHCP, HTTP, HTTPS, DynDNS, SMTP, RADIUS,
 - Syslog, NTP server, HTTP request
- API**
 - Application Programming Interface
 - XML, JSON
- System Usability**
 - Multi-language mobile interface
 - First-time wizard
 - Sensor graphing for single and multiple sensors
- Virtual sensors / devices / elements**
 - PING, Timers, Triggers, Logic schemes, SNMP GET
 - IP cameras, Groups, Math
- Notifications and alerts**
 - E-mail, SMS, Phone dial, SNMP Traps, Web-to-SMS, SMS link
- Logging**
 - SD card, USB flash, E-mail, FTP

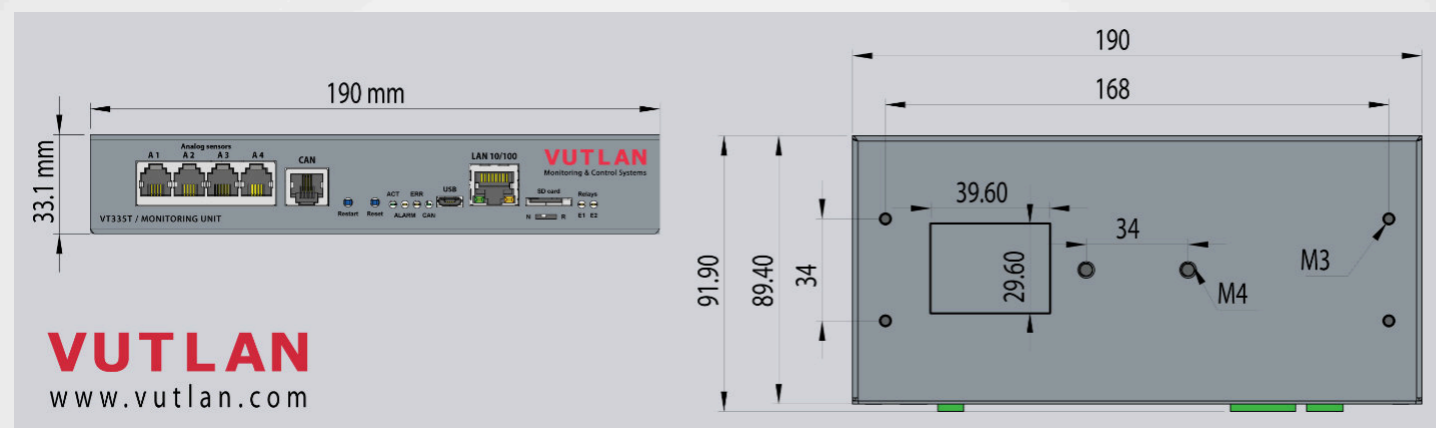
Embedded Web Interface



Monitor & Control

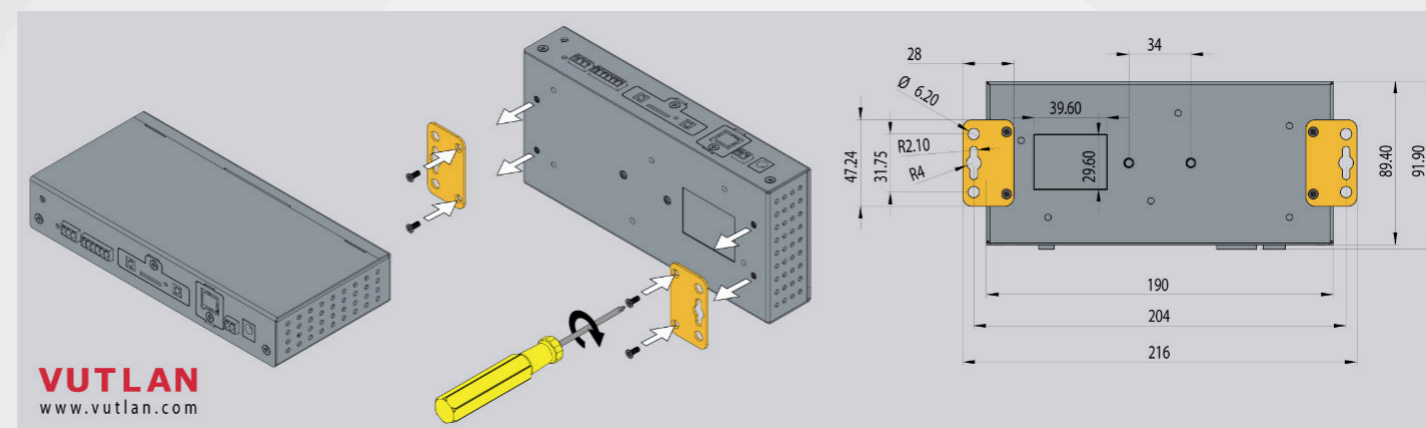
- Humidity
- Motion
- SNMP Trap, Get
- Smoke
- Modbus TCP/IP, RTU
- Relays
- Temperature
- Leakage
- Vibration
- Contacts
- Access
- Airflow
- Proximity
- Pressure
- Level
- PING
- AC / DC Power
- 4-20mA
- Alarms

VT335t dimensions



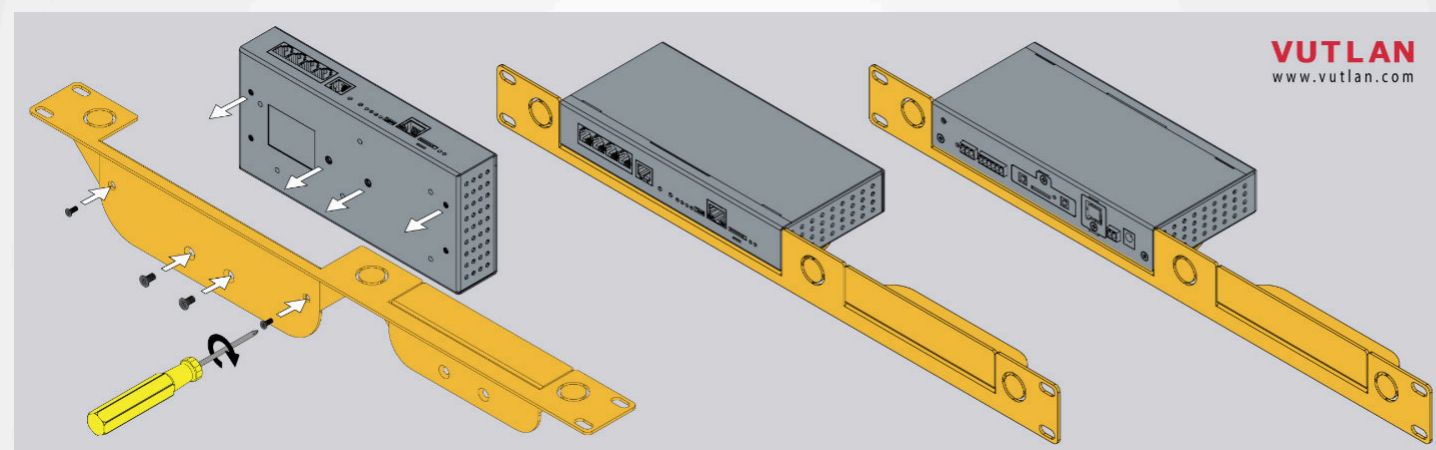
VT123 / Wall mounting brackets

Ordered separately



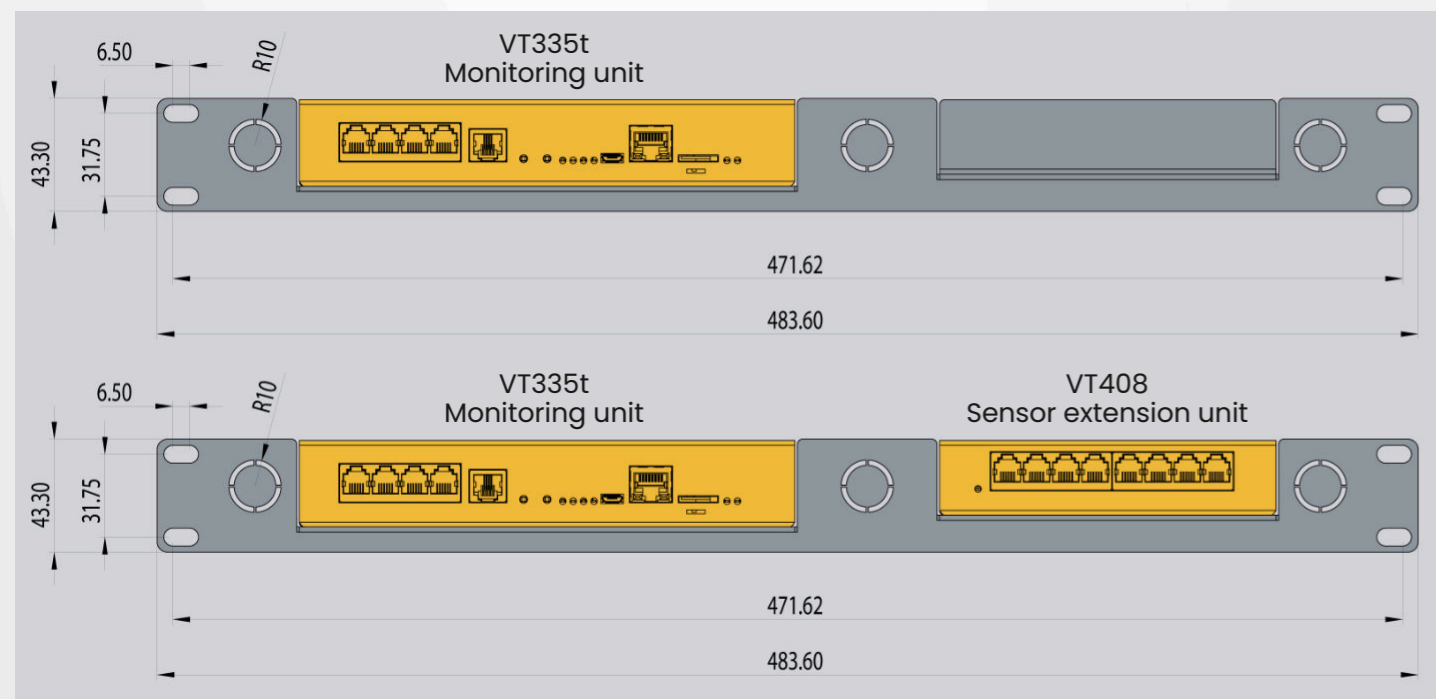
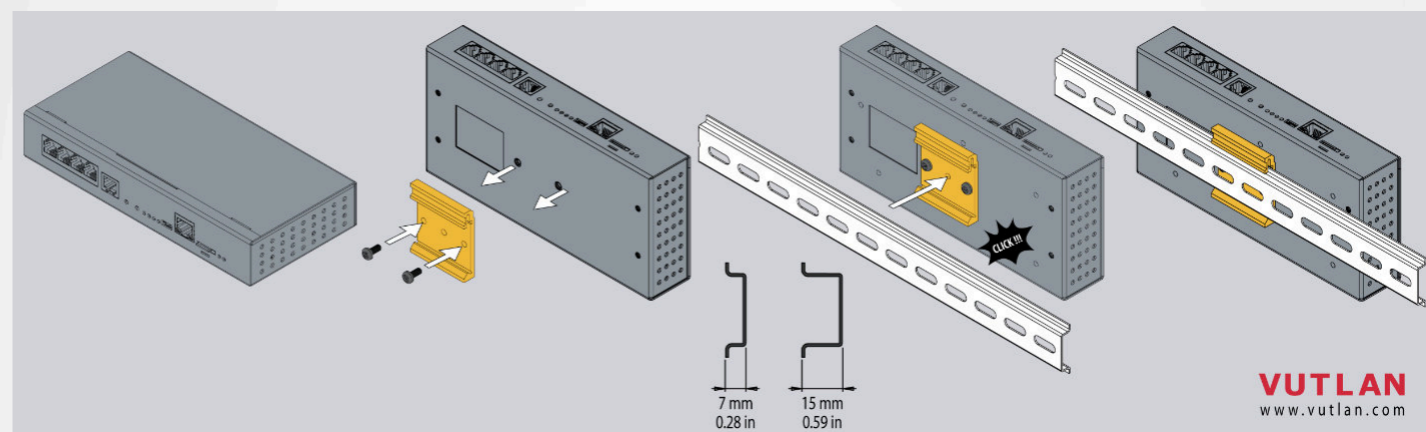
VT122t / 19" 1U bracket (for x1 VT335t, x1 VT408)

Ordered separately



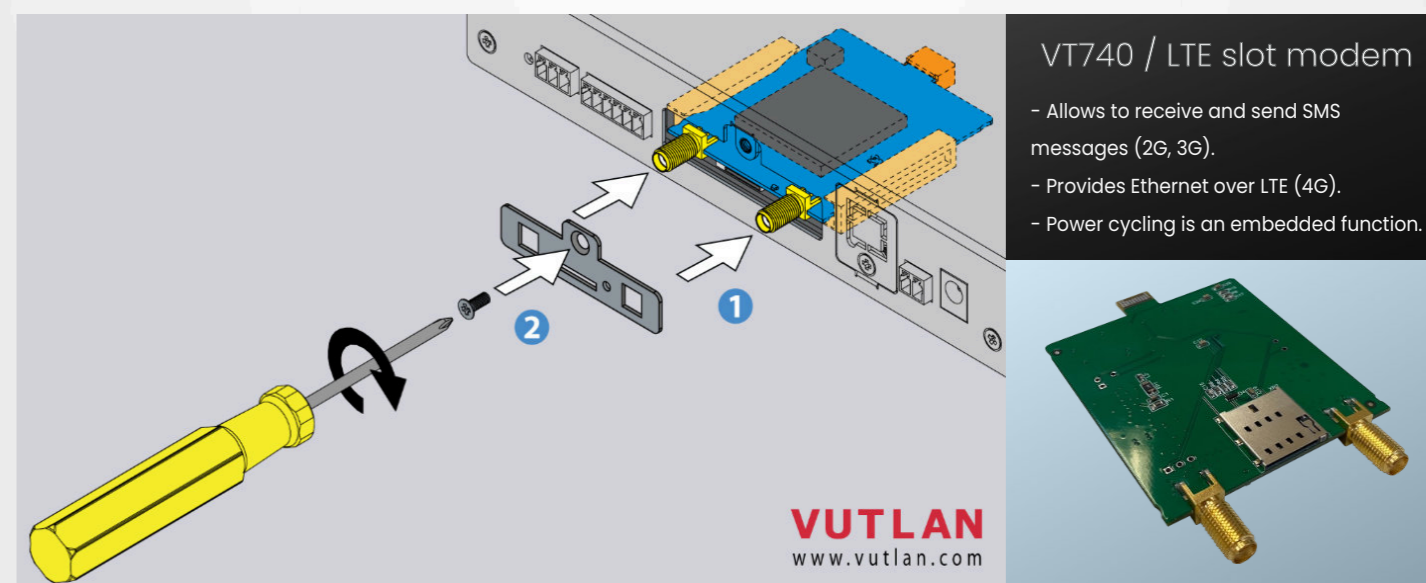
VT124 / DIN rail holder

Ordered separately



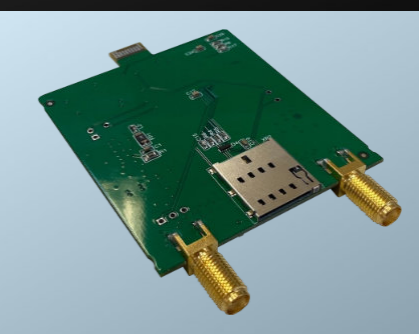
VT740 / LTE slot modem

Ordered separately

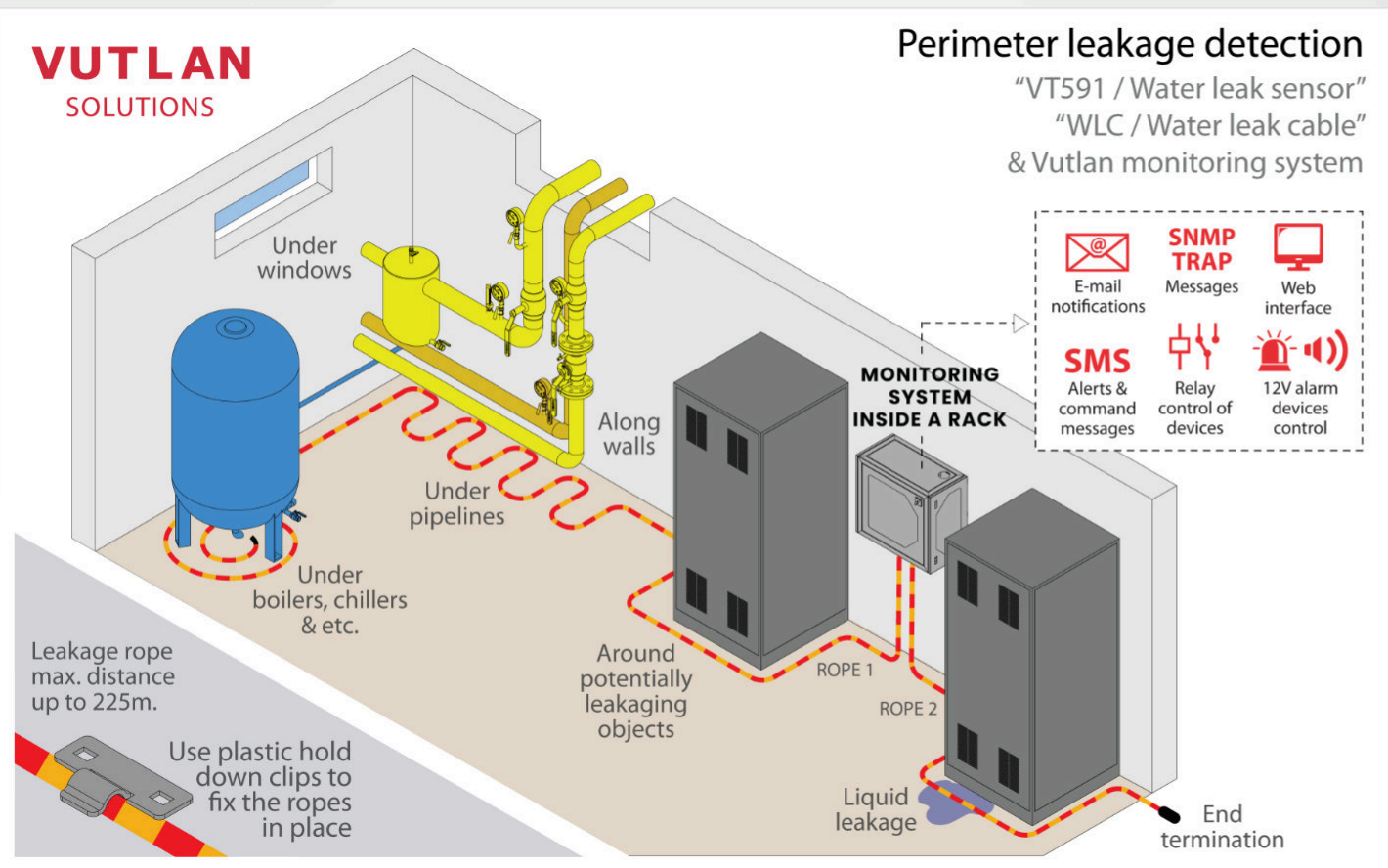


VT740 / LTE slot modem

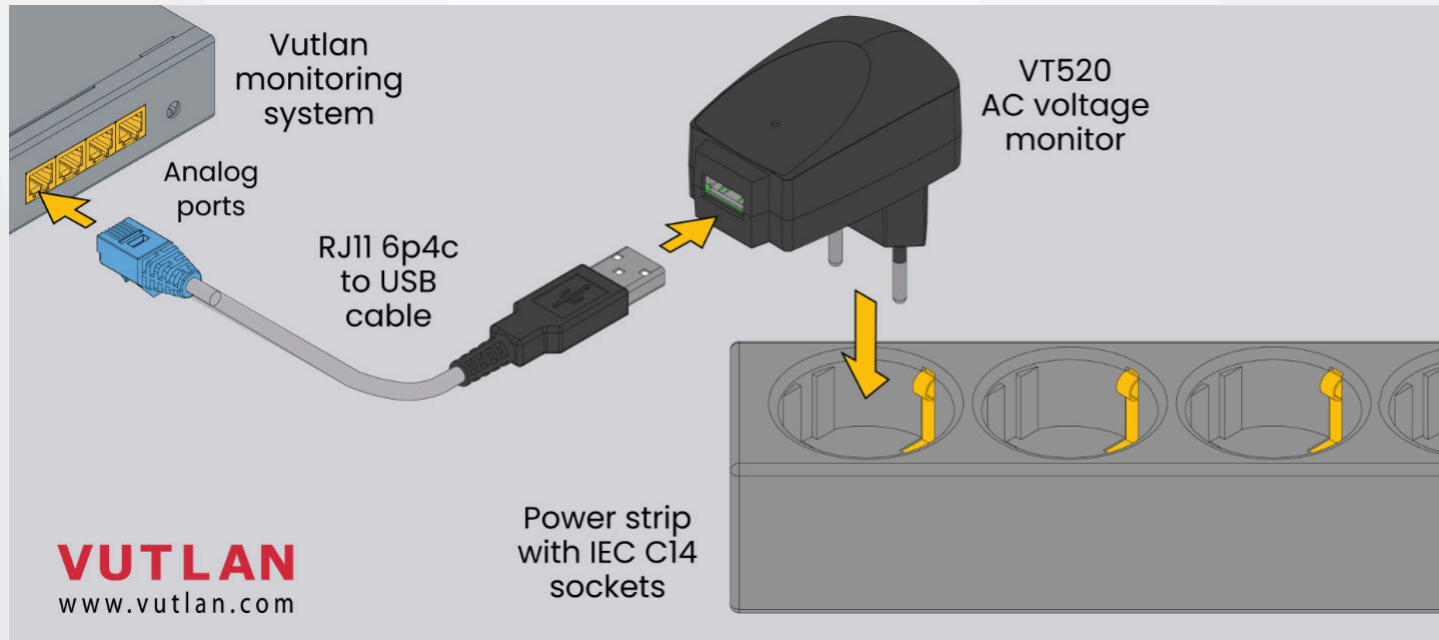
- Allows to receive and send SMS messages (2G, 3G).
- Provides Ethernet over LTE (4G).
- Power cycling is an embedded function.



Leakage detection

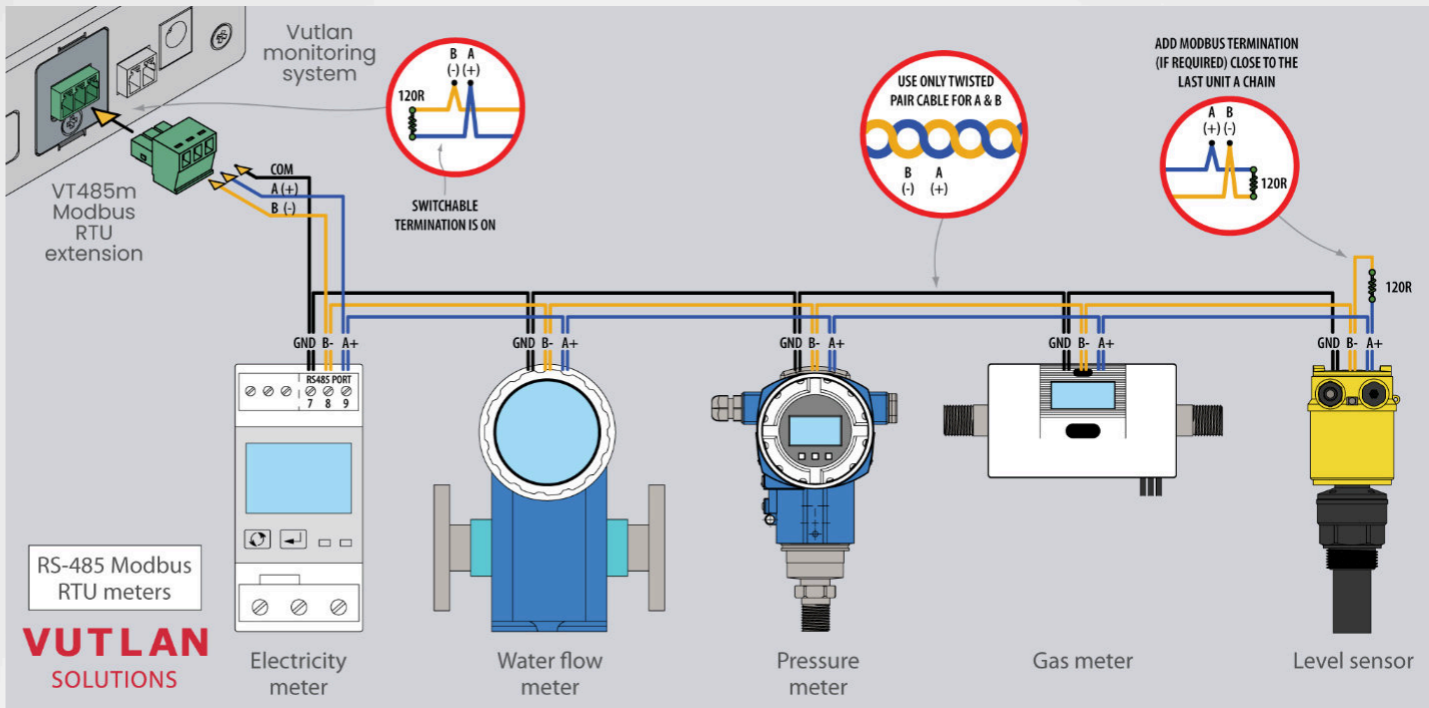


Measure AC voltage 0-246V

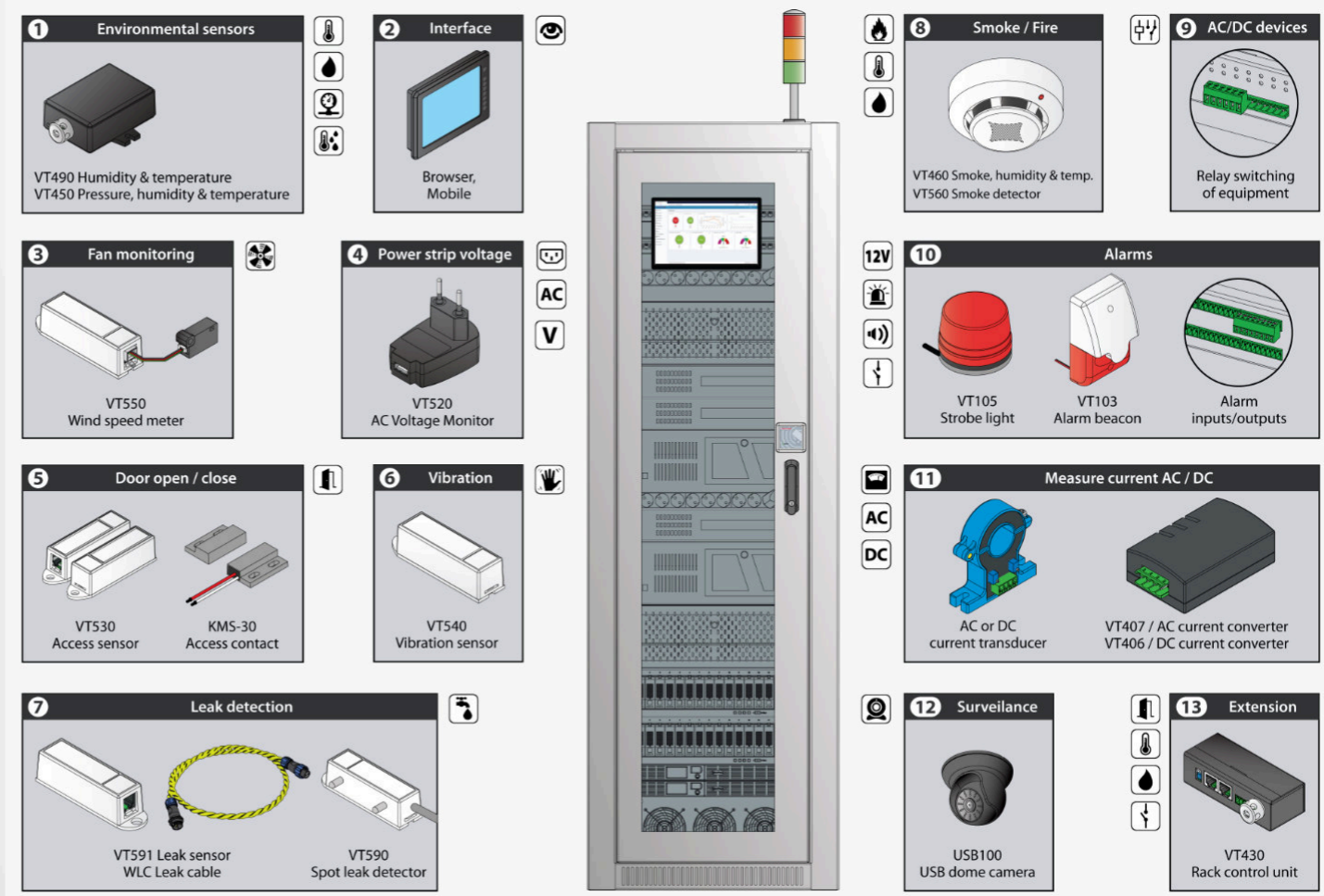


VT485m / Modbus RTU extension

Ordered separately



Server Rack & Data Center monitoring





Vutlan
Indonesia



TECHNISAF
NUSANTARA
DIGITAL

Phone : +62-21-39712705
sales@vutlan.id
www.vutlan.id

65+
PARTNERS

+37
COUNTRIES



VUTLAN