



Industrial Monitoring Unit VT336t

DIN controller
Monitoring your infrastructure 24/7

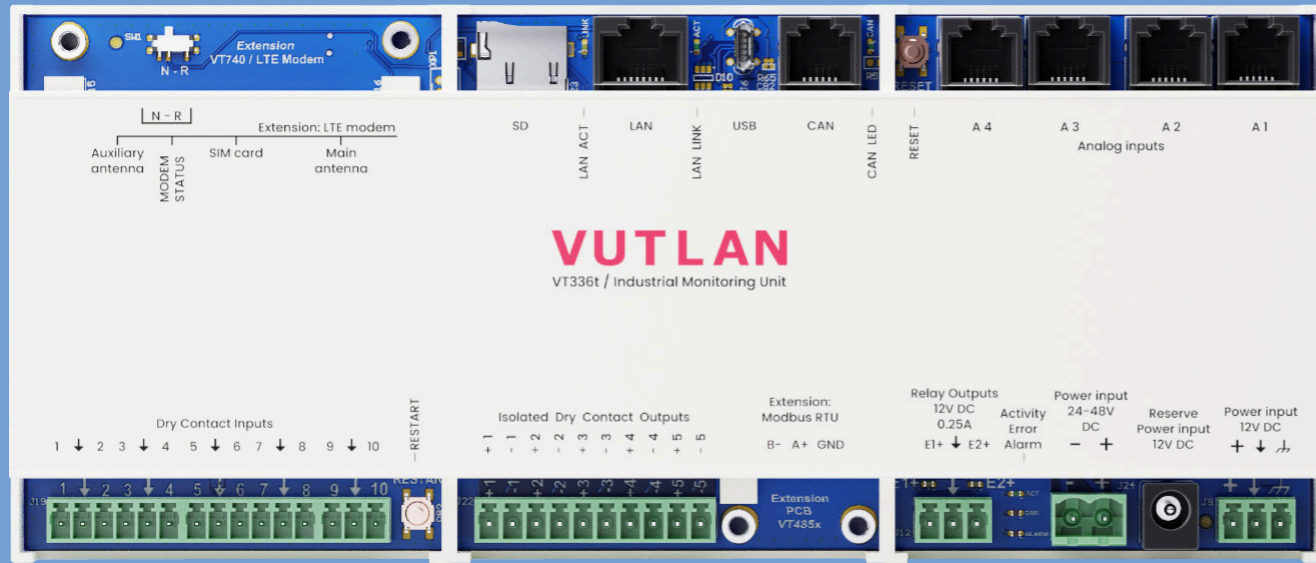
VUTLAN

VT336t / Industrial monitoring unit

Monitor 100 sensors, 700 elements,
Redundant Power & Network,
DIN controller

Perfect for monitoring:

- Warehouses
- Mechanical rooms
- Production rooms



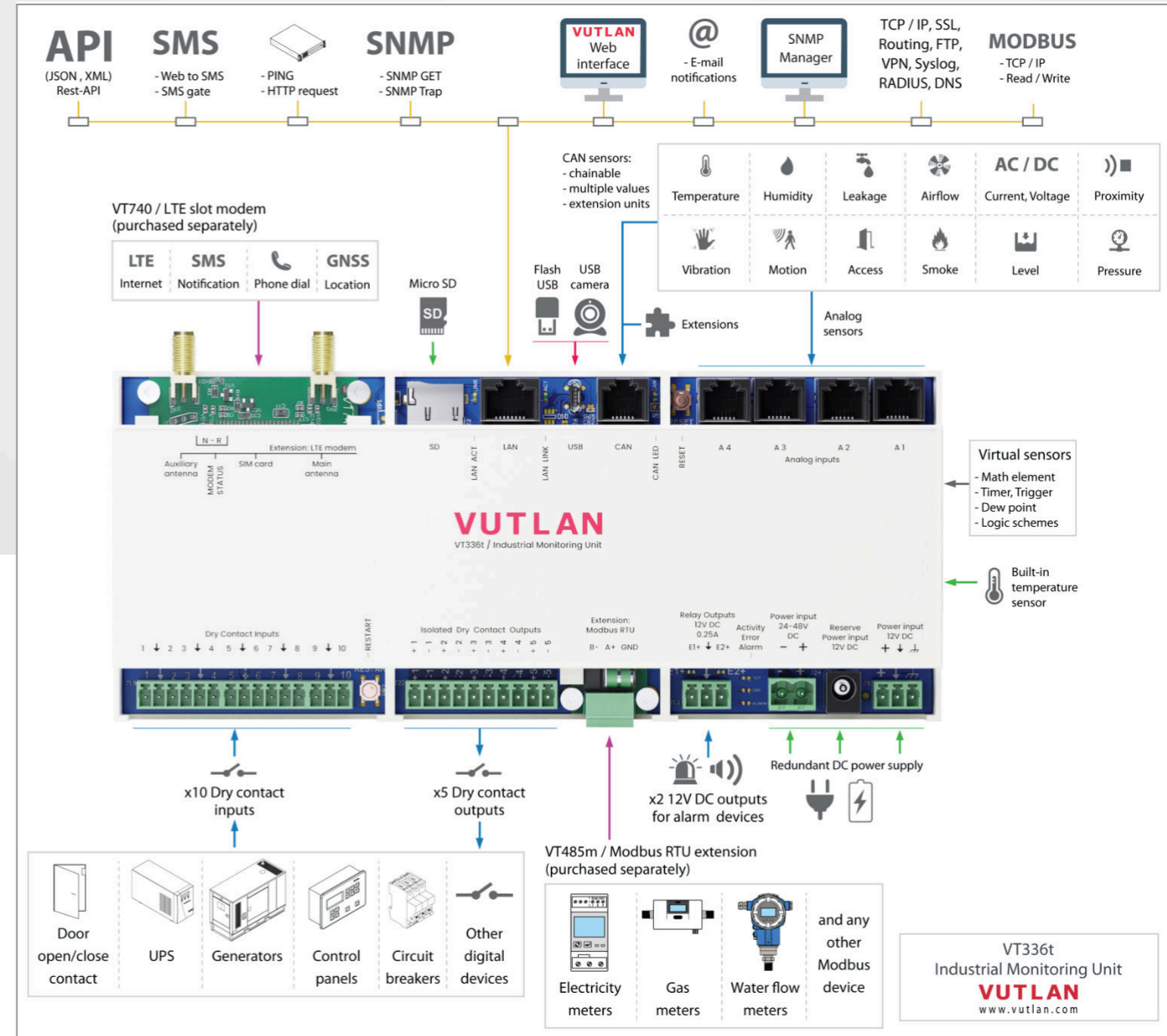
Specifications

CPU Speed / RAM / OS	2 cores, 720mHz / 128Mb / Linux v.6.2
Ethernet	10/100Mbps
Redundant power	x2 12V DC inputs, x1 24-48V DC
USB port	For USB camera, USB flash, USB hub
Analog ports	x4 ports for sensors (extendable)
CAN port	x1 port (max. 32 sensors & extensions)
Dry Contact inputs	x10 digital inputs
Dry Contact outputs	x5 digital outputs
Relays (12VDC)	x2 outputs, 0.25A each
SD card slot	Up to 512 Gb SDHC
LTE slot modem	Ethernet, SMS, GPS (VT740 ordered separately)
Mounting	DIN rail, Wall
Extensions	VT485m / Modbus RTU extension VT740 / LTE slot modem
Warranty	3 years
Support	On-line portal

Supports

- Centralized Monitoring & Control**
 - Responsive Web Interface
 - SNMP v1, v2c, v3
- Scalability**
 - Extension units, LTE modem, Modbus RTU
 - Modbus TCP/IP, 4-20mA, 0-10V, Analog, CAN
- Improved security**
 - OpenVPN, SSL, HTTPS
 - Three-tier data access permissions with login
- Protocol support**
 - DHCP, HTTP, HTTPS, DynDNS, SMTP, RADIUS, Syslog, NTP server, HTTP request
- API**
 - Application Programming Interface
 - XML, JSON
- System Usability**
 - Multi-language mobile interface
 - First-time wizard
 - Sensor graphing for single and multiple sensors
- Virtual sensors / devices / elements**
 - PING, Timers, Triggers, Logic schemes, SNMP GET
 - IP cameras, Groups, Math
- Notifications and alerts**
 - E-mail, SMS, Phone dial, SNMP Traps, Web-to-SMS, SMS link
- Logging**
 - SD card, USB flash, E-mail, FTP

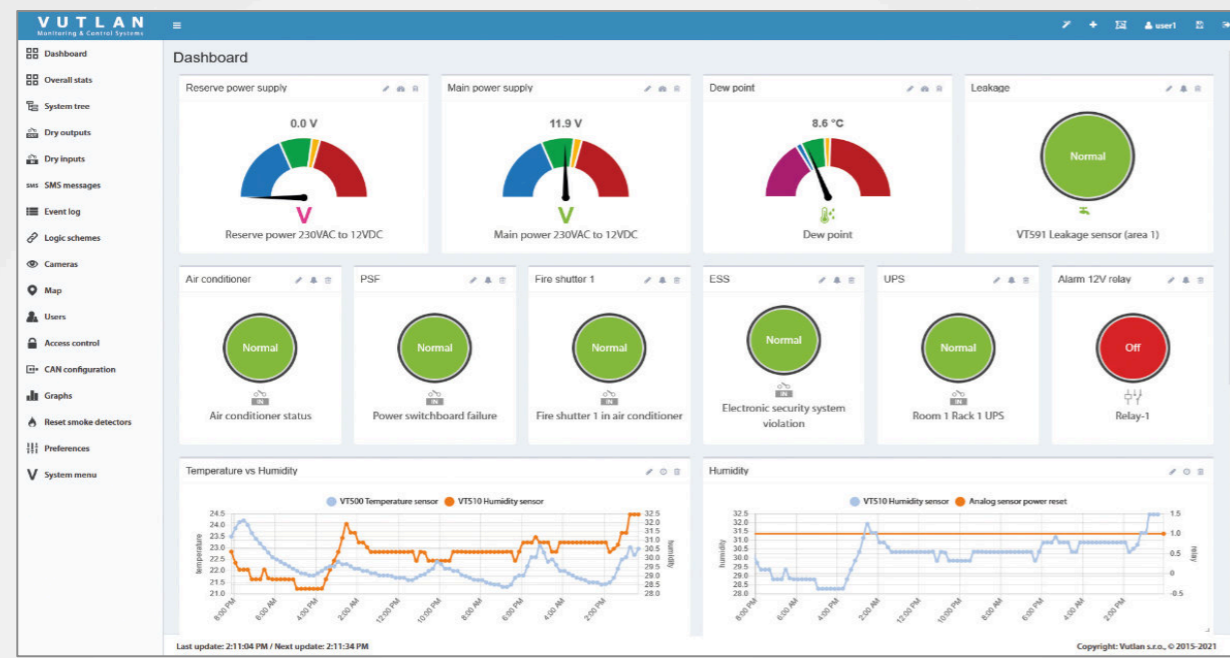
Example connection



Monitor & Control

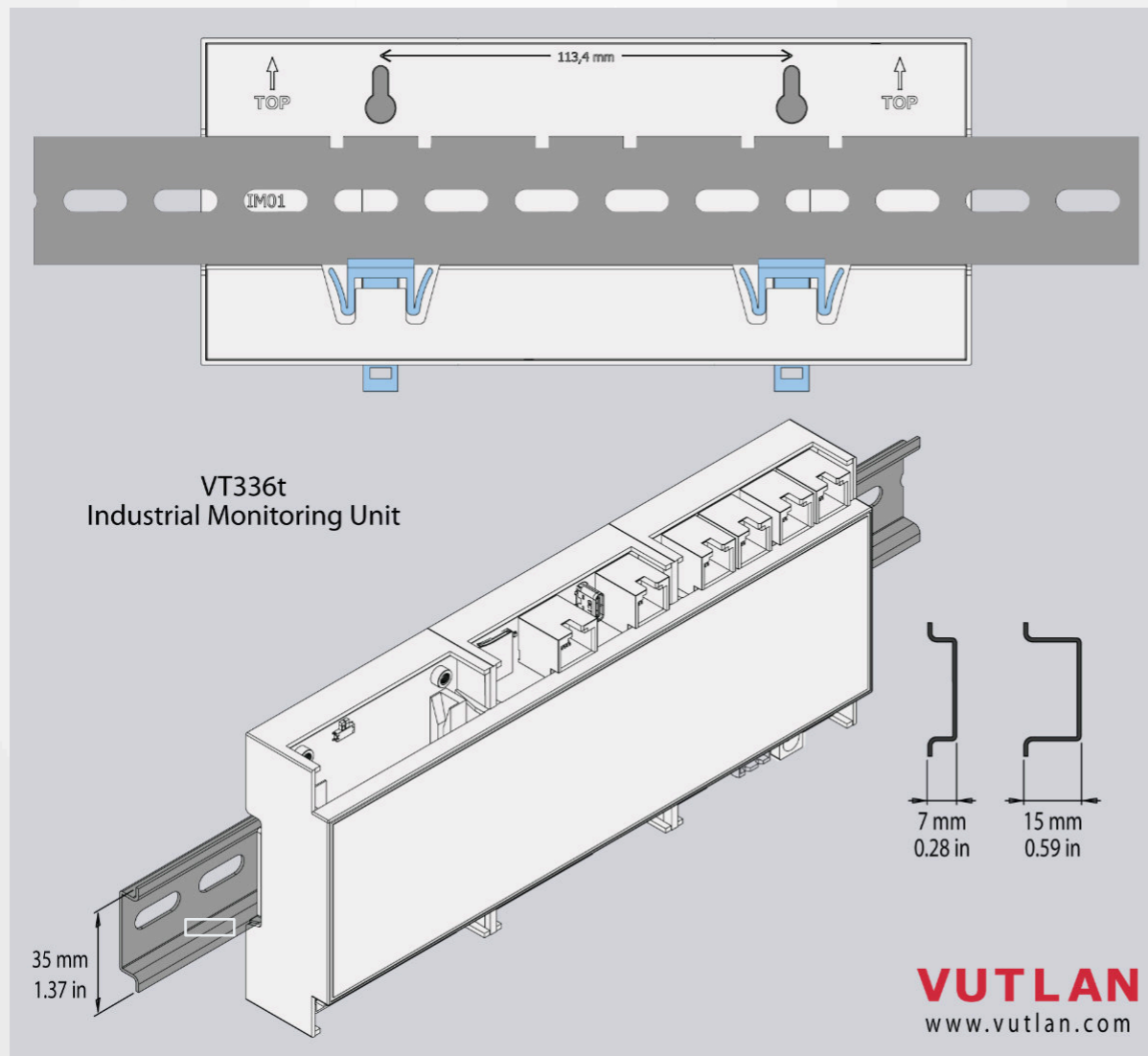
- Humidity
- Motion
- SNMP Trap, Get
- Smoke
- Modbus TCP/IP, RTU
- Relays
- Temperature
- Leakage
- Vibration
- Contacts
- Access
- Airflow
- Proximity
- Pressure
- Level
- PING
- AC/DC Power
- 4-20mA
- Alarms

Embedded Web Interface



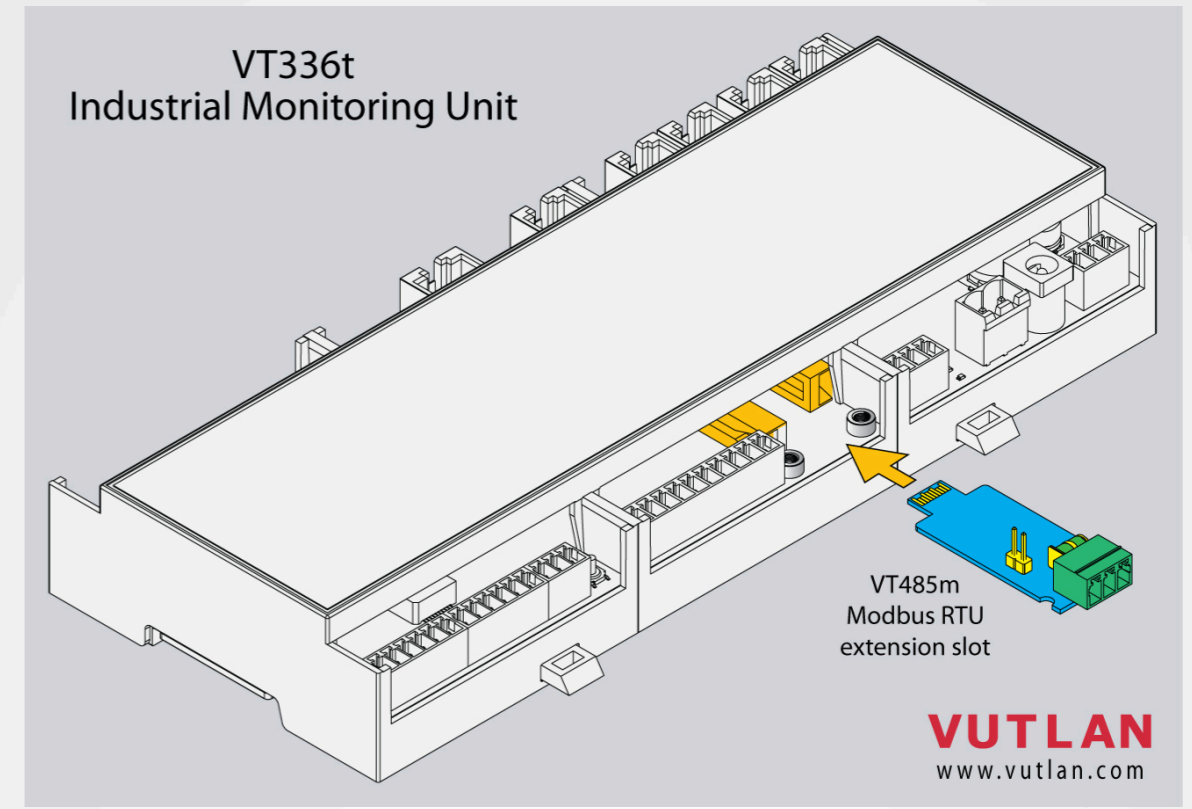
DIN rail installation

Ordered separately



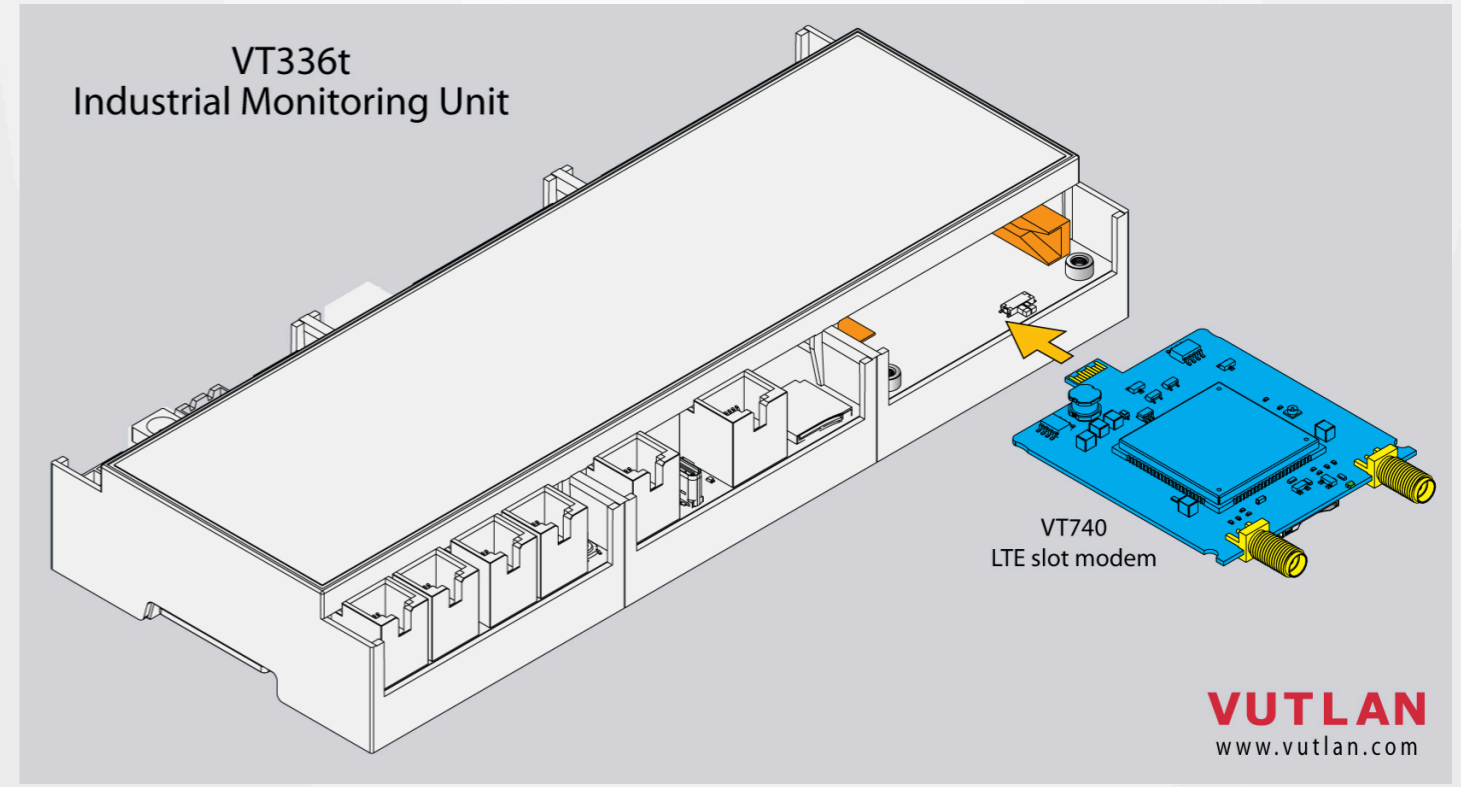
VT485m / Modbus RTU extension

Ordered separately

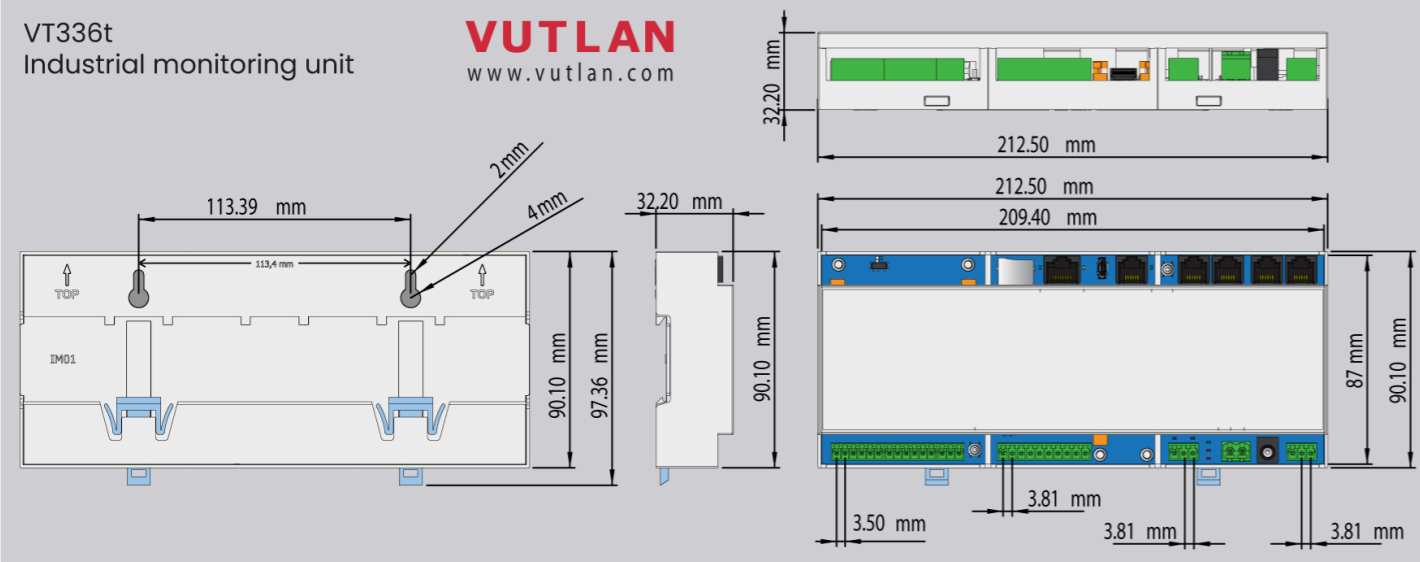


VT740 / LTE slot modem

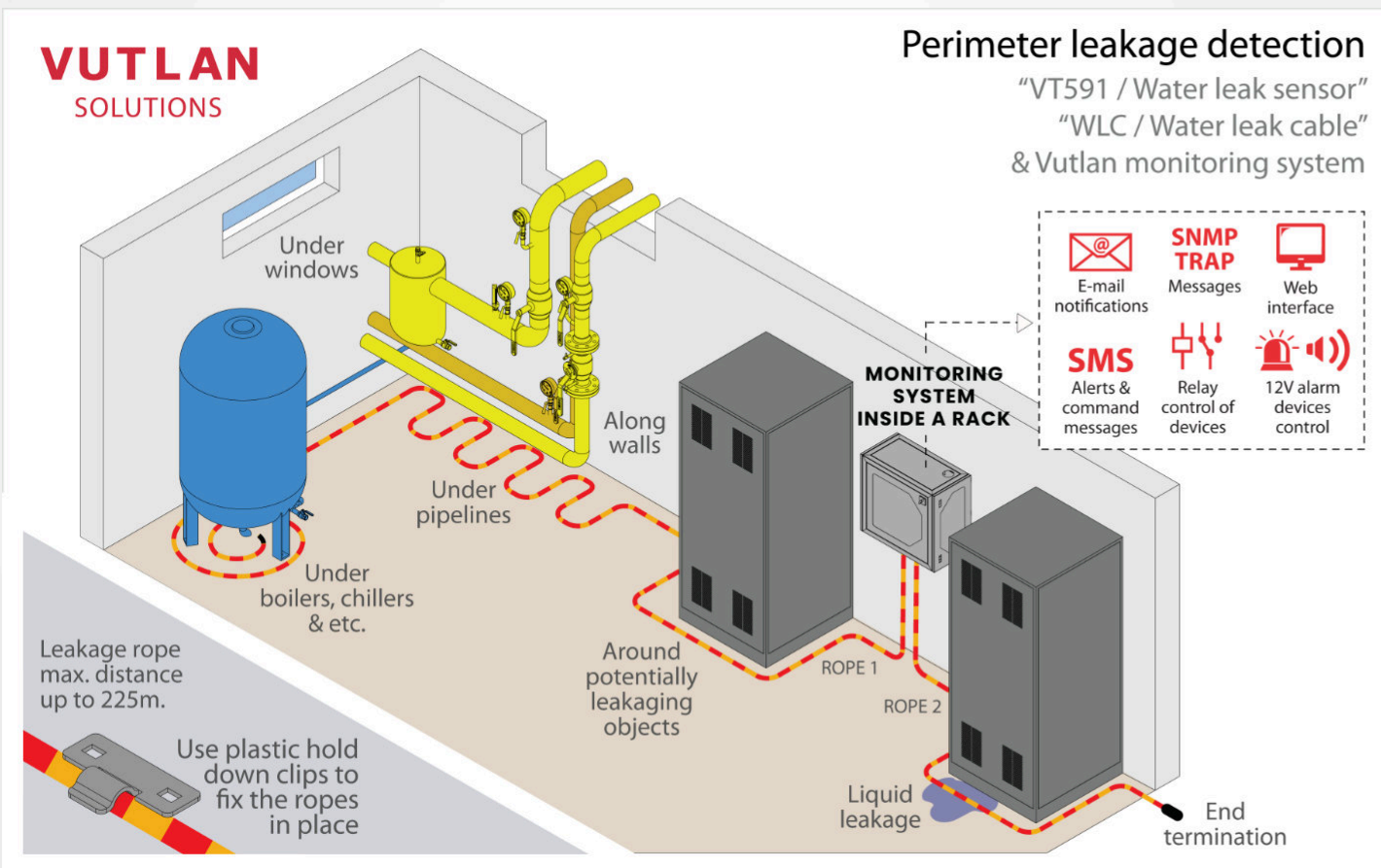
Ordered separately



VT336t dimensions & Wall installation

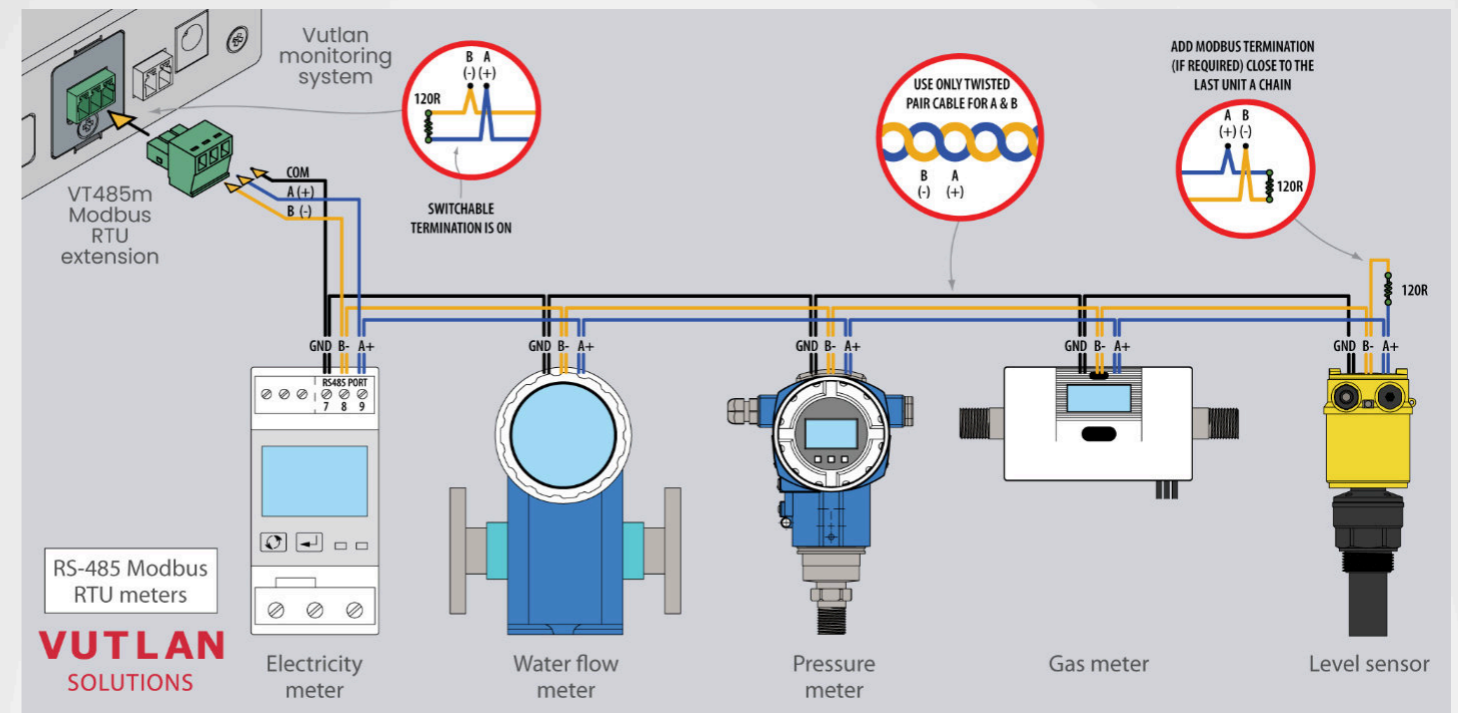


Leakage detection

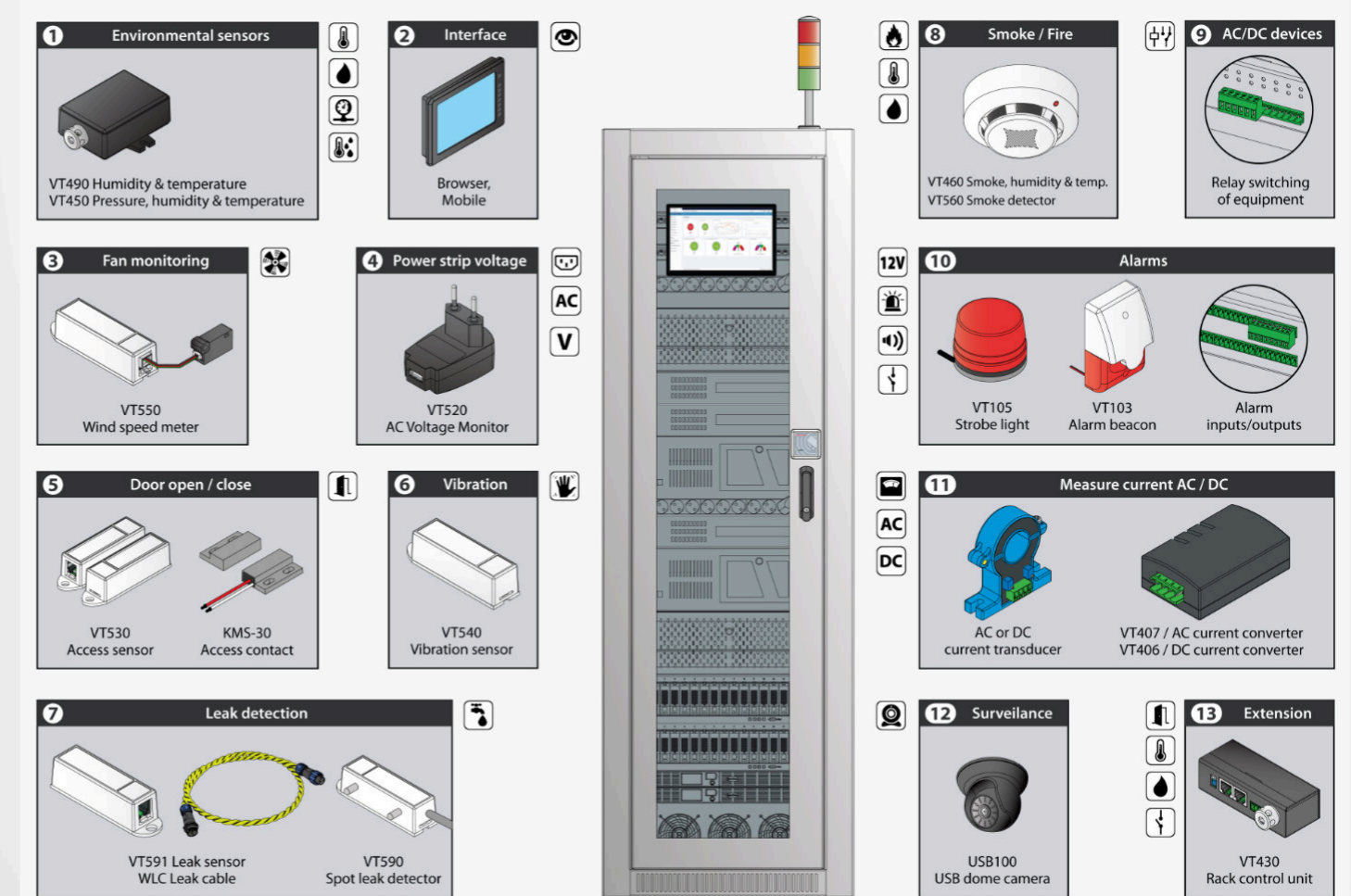


VT485m / Modbus RTU extension

Ordered separately



Server Rack & Data Center monitoring





Vutlan
Indonesia

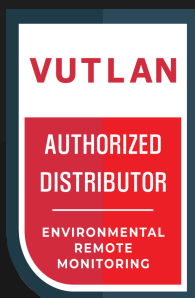


TECHNISAF
NUSANTARA
DIGITAL

Phone : +62-21-39712705
sales@vutlan.id
www.vutlan.id

65+
PARTNERS

+37
COUNTRIES



VUTLAN