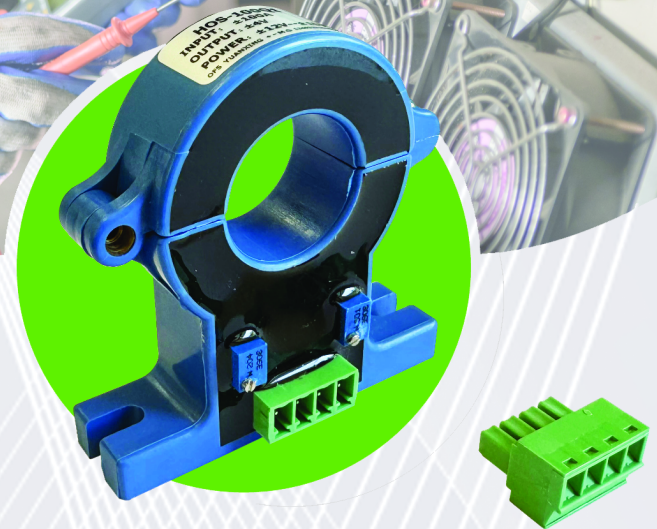


HOS-100Q1 DC Current Sensor & VT406 DC Current Converter

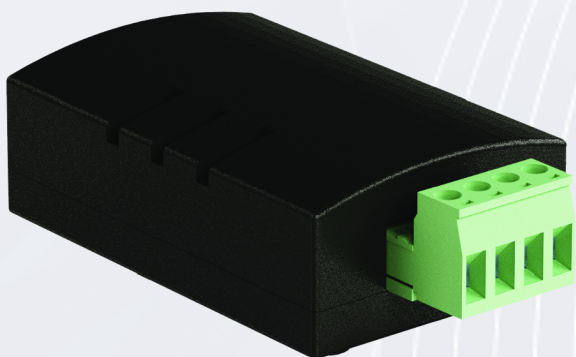
- DC Current Monitoring
- Energy Management
- $\pm 100A$, DC

VUTLAN
SOLUTIONS

The **HOS-100Q1** is a simple open-loop DC transducer capable of measuring DC currents in the range of $\pm 100A$. It is designed for applications where accurate current measurement is critical, such as power monitoring and energy management systems.



The **VT406 / DC current transceiver** bridges the measured data from the HOS-100Q1 transducer to the Vutlan monitoring system. This setup allows for real-time monitoring and analysis of current flow, ensuring that any irregularities in the system are detected early, which is crucial for the protection and stability of electrical systems.



HOS-100Q1 DC current sensor

Measured current	$\pm 100A$, DC
Max. isolation voltage	2kV
Max. cable diameter	10 mm
Operating temperature	From $-10^{\circ}C$ to $+80^{\circ}C$
Operating humidity	5% - 95% (Non-Condensing)

VT406 DC Current Converter

Type	Analog sensor, converter, adapter
Output	x1 RJ11 6P4C
Power	12 V, 1A
HS Code, GTIN	90303370, 8588009886563